

Strand Lighting

P R O D U C T D A T A

Quartet F

Compact, economical Fresnel spotlight with a smooth, soft-edged 10° to 40° variable beam. Optional barndoor accessory.

Cat. No.	Description
11164	Quartet F, 240V
11163	Quartet F, 230V

Quartet PC

Compact, economical spotlight with a Prism-Convex lens giving a tighter beam and wider range of beam angles from 7.5° to 55.5°. Optional barndoor accessory.

Cat. No.	Description
11174	Quartet PC, 240V
11173	Quartet PC, 230V

Quartet 15/25

Economically priced twin-lens zoom profile spotlight with beam angle adjustable between 15° to 25° with hard/soft focus control and peak/flat beam distribution adjustment.

Cat. No.	Description
11184	Quartet 15/25, 240V
11183	Quartet 15/25, 230V

Quartet 22/40

Economically-priced twin-lens zoom profile spotlight with beam angle and focus control in addition to peak/flat beam distribution adjustment. Optional iris diaphragm or gobo holder.

Cat. No.	Description
11194	Quartet 22/40, 240V
11193	Quartet 22/40, 230V

Quartet Accessories

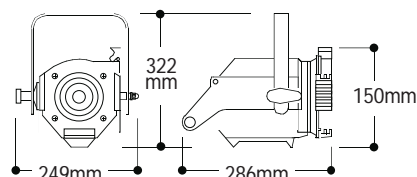
Cat. No.	Description
41264	Additional T 26, 650W, 240V lamp
41263	Additional T 26, 650W, 230V lamp
18040	Barndoor, 4-leaf rotatable
18041	Iris, 12-leaf
18042	Holder for M-size gobo
18043	Additional colour frame, card
18044	Colour frame, metal
82010	Hook Clamp

1.1.7

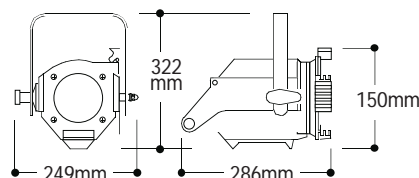
S P O T L I G H T S

QUARTET Mk2™ 500/650W

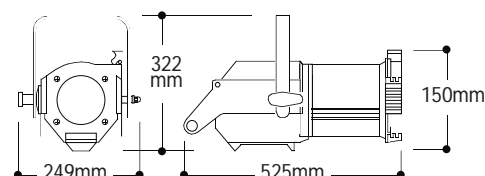
Quartet F



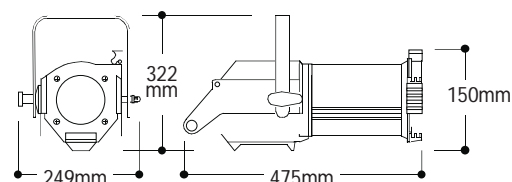
Quartet PC



Quartet 15/25



Quartet 22/40



- Modern styling, with a lightweight, rugged diecast body in black
- Ideal for theatres, school stages, museum and display lighting
- Insulated rear handle
- Barndoor optional extra
- Supplied with 650W T26 lamp, card colour frame, mounting fork with M10 wingnut and bolt, 1.5m power cable with plug fitted
- Available as either 240V version (with 240V lamp and 15A plug) or 230V version (with 230V lamp and Schuko plug)

Photometric Data

Typical performance based on: 650W T26 240V lamp.

Throw (metres)	4		6		8		10	
	Lux	Ø	Lux	Ø	Lux	Ø	Lux	Ø
Quartet F (N)	3100	0.97	1759	1.46	989	1.95	759	2.4
Quartet F (W)	420	4.3	304	6.4	130	8.5	99	10.6
Quartet PC (N)	2551	0.99	1860	1.5	960	1.98	587	2.4
Quartet PC (W)	275	4.85	180	7.3	87	9.7	55	12.0
Quartet 15/25 (N)	2990	1.05	1980	1.6	1120	2.1	728	2.6
Quartet 15/25 (W)	1780	1.8	1430	2.7	740	3.7	409	4.4
22/40 Quartet (N)	1730	1.6	1220	2.3	650	3.1	408	3.9
22/40 Quartet (W)	980	2.9	830	4.4	380	5.8	230	7.3

Ø = Beam Diameter in metres.

Peak Intensity, Half Peak and Cut-off

	1/2 Pk	Pk Candelas	1/10 Pk
Quartet F (N)	7°	75900	14°
Quartet F (W)	45°	13200	56°
Quartet PC (N)	7.5°	64100	12.5°
Quartet PC (W)	55.5°	7400	65°

	1/2 Pk (Peaky)	Candelas (Peaky)	1/2 Pk (Flat)	Candelas (Flat)	Cut-off
Quartet 15/25(N)	11°	81350	14°	75030	15°
Quartet 15/25(W)	24°	31970	23°	35480	25°
22/40 Quartet (N)	16°	42110	22°	32120	22°
22/40 Quartet (W)	12.5°	24610	36.5°	5920	40°

Lamp Data

Specify lamps for replacement purposes to the following specifications

Watts	650W	500W	500W
Designation	T26	T18	M40
Base	GY9.5	GY9.5	GY9.5
Catalogue Number	41264 (240V) 41263 (230V)	41184 (240V) 41183 (230V)	41404 (240V) 41403 (230V)
Rated Life-Hours	400	400	2000
Colour Temperature	3050K	3050K	2900K

Electrical Data

Supply Volts	230V/240V 50/60Hz
Max Lamp Watts	650W
Lamp Type/Socket	T26 650W, T18, M40 500W GY 9.5
Cable/Connections	Supplied with 1.5m power cable silicone insulated with connector as specified.
Standards Compliance	Designed to conform to EN 60 598 2-17

Environmental Data

Max Operating Ambient Temp	45°C
Max Surface Temp	210°C
IP Rating	IP20
Tilt/Recommended Angles of Use	45° - 0 - 90°

Mechanical Data

Paint/Finish	Black epoxy powder coat paint finish.
Lamp House	Pressure diecast aluminium, baffled to prevent light spill and allow ventilation. Heat resistant rear handle.
Reflector	Profiles: Near ellipsoidal polished, anodised aluminium. Fresnel & PC: Edge-masked spherical reflector of polished, anodised aluminium.
Lens(es)	Profiles: Plano-convex and positive meniscus made of heat resistant borosilicate glass mounted in diecast aluminium lens carriers Fresnel/PC: Moulded borosilicate lenses retained in front aluminium diecast lens carriers by means of spring clips.
Mounting /Suspension	Steel fork, insulated handwheel, with M10 bolt, washer and wingnut for attachment and swivel adjustment.

Weights and Dimensions

	Quartet F	Quartet PC	Quartet 1525	Quartet 22/40
Weight	3.1kg	3.3kg	5.5kg	5.2kg
Length	286mm	286mm	525mm	475mm
Width	249mm	249mm	249mm	249mm
Height	322mm	322mm	322mm	322mm
Packed Weight	4.0kg	4.2kg	6.1kg	6.0kg
Packed Length	400mm	400mm	540mm	590mm
Packed Width	290mm	290mm	290mm	290mm
Packed Height	290mm	290mm	290mm	290mm
Filter Cut Size	150mm x 150mm			

Operational Data

Focus Adjustment	Fresnel & PC: Slide adjustment by means of thumb wheel on underside of lamp tray. Profiles: Thumb wheels on side of lens tube
Beam Shaping	Fresnel & PC: The two colour runners will accept a 4-leaf rotating barndoor accessory. Profiles: The gate assembly is supplied with four beam shaping shutters, each with insulated handle.
Lamp Access	Through hinge-down lampray secured by quarter turn fastener.

Strand Lighting

London: Strand Lighting Ltd, Grant Way, Isleworth, Middlesex, TW7 5QD, United Kingdom.
Tel: +44 (0)181 560 3171 Fax: +44 (0)181 568 2103

Hannover: Strand Lighting GmbH, Salzbergerstrasse 2, 38302 Wolfenbüttel-Salzdahlum, Germany
Tel: +49 5331 30080 Fax: +49 5331 78883

Rome: Strand Lighting Italia Srl, Via delle Gardenie 33, 00040 Pomezia, Roma, Italy

Tel: +39 (0)6 914 7123 Fax: +39 (0)6 914 7136

Hong Kong: Strand Lighting Asia Limited, 7/F Corporation Square, 8 Lam Lok Street, Kowloon Bay, Kowloon, Hong Kong
Tel: +852 2757 3033 Fax: +852 2757 1767

ALSO

FACILITIES IN: LOS ANGELES • NEWYORK • TORONTO

For more information on Strand products and World Wide facilities see our Web page

<http://www.strandlight.com>

The Company reserves the right to make any variation in design or construction to the equipment described. Strand™ and Strand Lighting™ are trade marks of the Strand Lighting Limited and Strand Lighting Inc Group of Companies.

© Copyright Strand Lighting Limited September 1997